



# MONTHLY MEMBERSHIP PROGRESS REPORT

District 410 D

Results as of: 2/28/2014

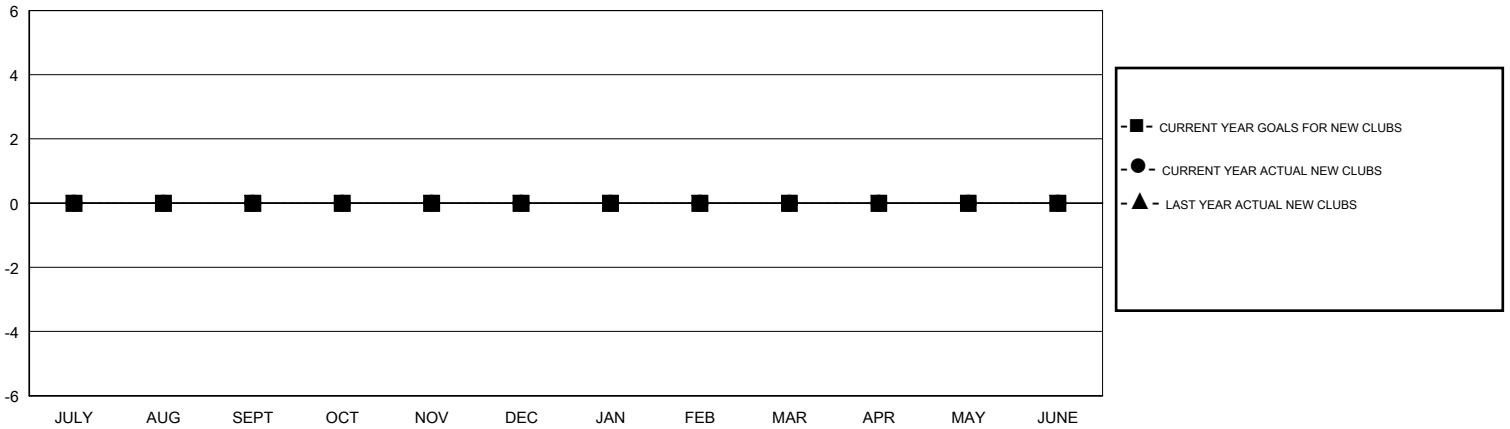
GMT: Joachim Kastner

LOCATION REP OF SOUTH AFRICA

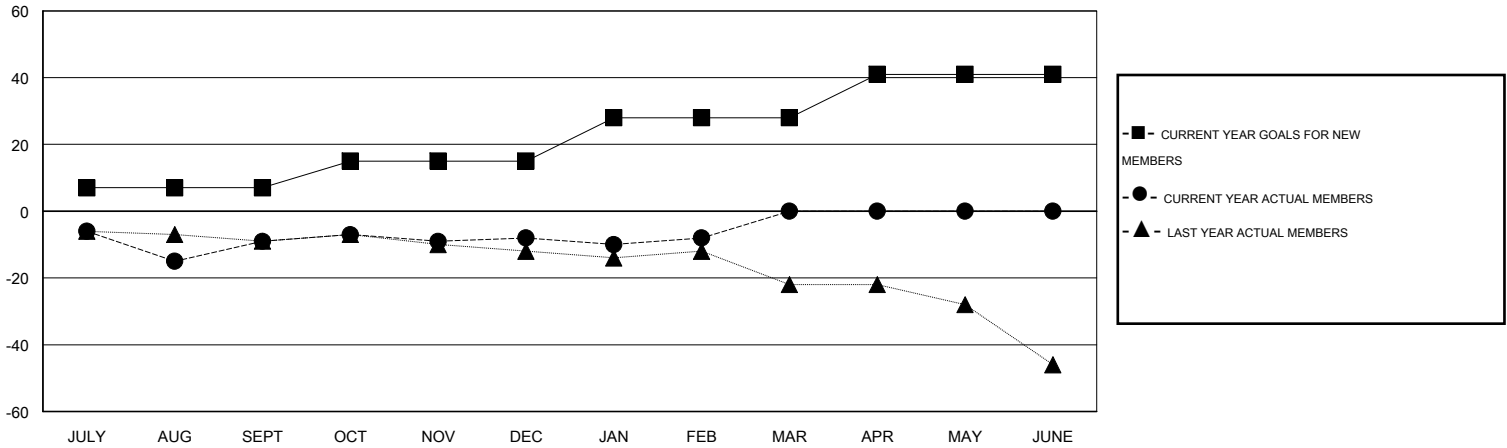
GMT CA 6-Af

| Clubs                 |               |                  |                      |                      | Members               |                 |                            |                        |                      |
|-----------------------|---------------|------------------|----------------------|----------------------|-----------------------|-----------------|----------------------------|------------------------|----------------------|
| RESULTS FOR 2013-2014 |               |                  |                      |                      | RESULTS FOR 2013-2014 |                 |                            |                        |                      |
| QUARTER               | NEW CLUB GOAL | ACTUAL NEW CLUBS | ACTUAL DROPPED CLUBS | ACTUAL NET GAIN/LOSS | QUARTER               | NEW MEMBER GOAL | ACTUAL TOTAL MEMBERS ADDED | ACTUAL DROPPED MEMBERS | ACTUAL NET GAIN/LOSS |
| JULY/AUG/SEPT         | 0             | 0                | 0                    | 0                    | JULY/AUG/SEPT         | 7               | 15                         | 24                     | -9                   |
| OCT/NOV/DEC           | 0             | 0                | 0                    | 0                    | OCT/NOV/DEC           | 8               | 10                         | 9                      | 1                    |
| JAN/FEB/MAR           | 0             | 0                | 0                    | 0                    | JAN/FEB/MAR           | 13              | 12                         | 12                     | 0                    |
| APR/MAY/JUNE          | 0             | 0                | 0                    | 0                    | APR/MAY/JUNE          | 13              | 0                          | 0                      | 0                    |

GOALS AND ACTUAL NEW CLUBS CUMULATIVE



GOALS AND ACTUAL MEMBERS CUMULATIVE



|  |   |   |
|--|---|---|
| DROPPED CLUBS: 0   | 13 CLUBS OF 30 ADDED 1 OR MORE NEW MEMBERS            | <b>GENDER DISTRIBUTION</b><br>MALE 241 (64.27%)<br>FEMALE 134 (35.73%)      |
| <b>DROPPED MEMBERS</b><br>DECEASED 0<br>CLUB CANCELLED 0<br>OTHER 45<br>TOTAL 45 | <a href="#">CLICK HERE FOR HEALTH ASSESSMENT DATA</a> | FAMILY UNIT MEMBERS 122<br>HEAD OF HOUSEHOLD 57<br>NON-HEAD OF HOUSEHOLD 65 |